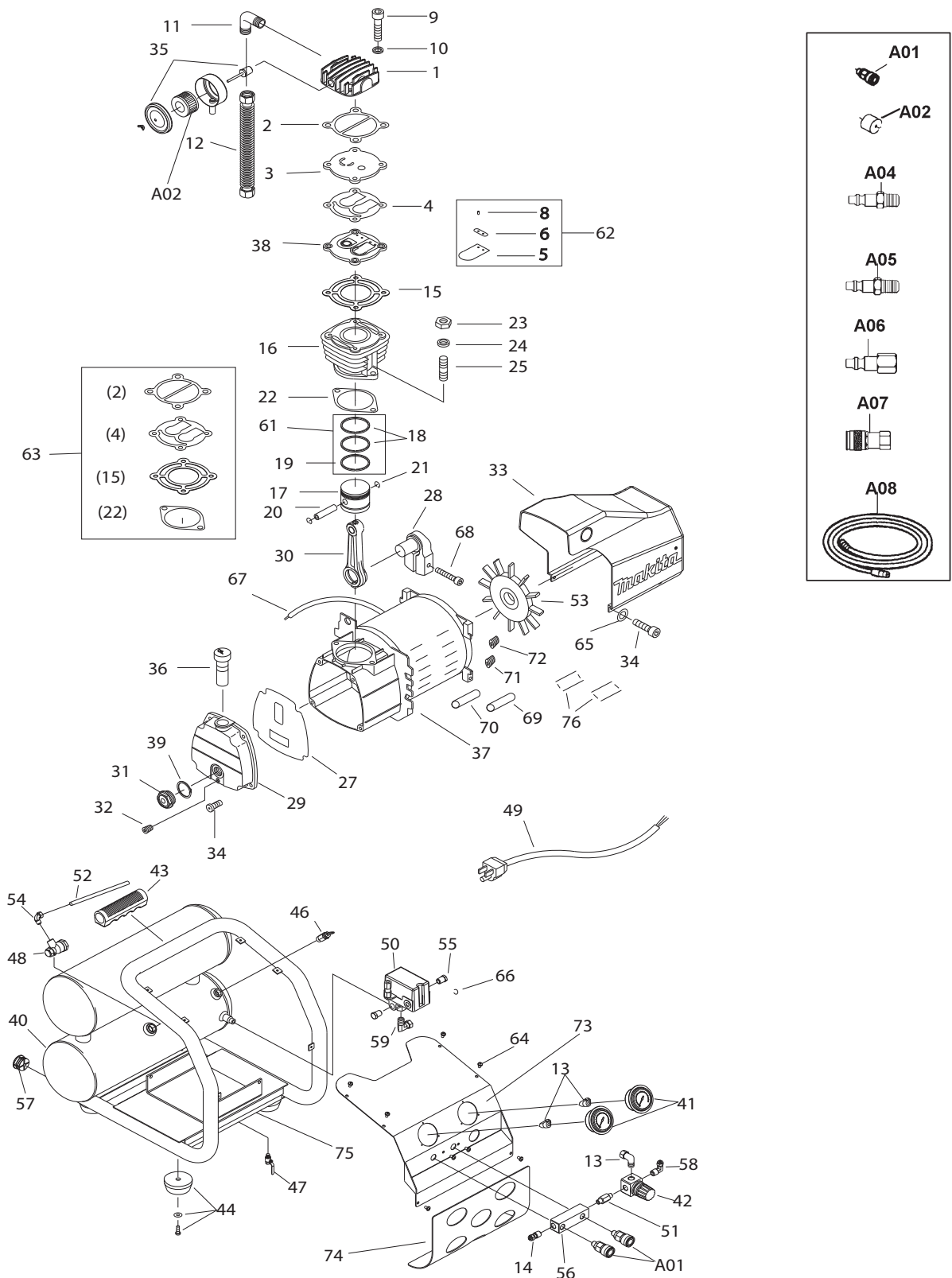




10 - 2010

MAC2400

2.5 H.P. 4.2 GAL - TWIN STACK COMPRESSOR



Item No	Type	Sub	Part No	Description	Qty	Unit
001			101009	CYLINDER HEAD	1	PC.
002			211001	VALVE SEAT TO HEAD GASKET	1	PC.
003			104001	INLET VALVE SEAT	1	PC.
004			212001	INLET & EXHAUST VALVE SEAT GASKET	1	PC.
005			125001	INLET & EXHAUST VALVE SEAT PLATE	2	PC.
006			127001	INLET & EXHAUST SPRING PLATE	2	PC.
008			126001	VALVE PLATE PIN	4	PC.
009			352087	CYLINDER HEAD BOLT	4	PC.
010			382011	SPRING WASHER	4	PC.
011			151404	DISCHARGE ELBOW	1	PC.
012			230076S	DISCHARGE TUBE ASSY	1	PC.
013			151001	ELBOW	3	PC.
014			441025	NIPPLE	1	PC.
015			213001	VALVE SEAT TO CYLINDER GASKET	1	PC.
016			201017	CYLINDER	1	PC.
017			203011	PISTON	1	PC.
018			206003	COMPRESSION RING	2	PC.
019			207003	OIL CONTROL RING	1	PC.
020			204003	PISTON PIN	1	PC.
021			205001	PISTON PIN SNAP RING	2	PC.
022			214001	CYLINDER TO CRANKCASE GASKET	1	PC.
023			371005	SET NUT (CYLINDER TO CRANKCASE)	2	PC.
024			382005	SPRING WASHER (CYL. TO CRANKCASE)	2	PC.
025			358001	DOUBLE HEAD SCREW	2	PC.
027			215001	CRANKCASE COVER GASKET	1	PC.
028			302001	CRANKSHAFT	1	PC.
029			304015	CRANKCASE COVER	1	PC.
030			316001	CONNECTING ROD	1	PC.
031			321001	OIL SIGHT GAUGE	1	PC.
032			360001	OIL DRAINING PLUG	1	PC.
033			433011	MOTOR COVER	1	PC.
034	2		352071	MOTOR / CRANKCASE COVER BOLT	9	PC.
035			170013	AIR FILTER ASSY	1	PC.
036			324003	OIL FILLER/CRANKCASE BREATHER	1	PC.
037			251332	ELECTRIC MOTOR/CRANKCASE	1	PC.
		INC.		Item No. 69		PC.
038			114001	EXHAUST VALVE SEAT	1	PC.
039			217001	OIL GAUGE GASKET	1	PC.
040			401124	AIR TANK	1	PC.
041			411029	PRESSURE/REGULATOR GAUGE	2	PC.
		INC.	411029-1-01	GLASS LENS	2	PC.
042	2		410029	REGULATOR	1	PC.
043			435016	RUBBER HANDLE	1	PC.
044			434006	TANK FOOT ASSY	4	PC.
046			407001	SAFETY VALVE (1/4")	1	PC.
047			413008	DRAIN COCK	1	PC.
048			409004	CHECK VALVE	1	PC.
		INC.	485002	ORANGE PUCK	1	PC.
049			452005	POWER CORD	1	PC.
050			412024	PRESSURE SWITCH	1	PC.
051			441001	REGULATOR NIPPLE	1	PC.
052			228038	UNLOADING TUBE ASSY (1/4") (OLD# 228048)	1	PC.
053			431005	MOTOR FAN	1	PC.
054			151002	UNLOADING ELBOW	1	PC.
055			360002	PLUG	2	PC.
056			421006	MANIFOLD BLOCK	1	PC.
057			439009	HANDLE PLUG	2	PC.

Item No	Type	Sub	Part No	Description	Qty	Unit
058			151209	ELBOW	1	PC.
059			151209	ELBOW	1	PC.
061			RK2400	RING KIT	1	PC.
		INC.		Item No. 18, 19		
062			VK2400	VALVE KIT	2	PC.
		INC.		Item No. 5(1Ea.),6(1Ea.),8(2Ea.)		
063			GK2400	GASKET KIT	1	PC.
		INC.		Item No. 2,4,15,22		
064			365003	BOLT	8	PC.
065			382004	SPRING WASHER (FOR MOTOR)	4	PC.
066			457002	STRAIN RELIEF CLIP	1	PC.
067			453076	WIRING HARNESS(MOTOR PR. SWITCH)	1	PC.
068			352106	CRANKSHAFT BOLT	1	PC.
069			460008	START CAPACITOR	1	PC.
070			462009	RUN CAPACITOR	1	PC.
071	2		458001	OVERLOAD SWITCH 15A	1	PC.
072			459001	CENTRIFUGAL SWITCH	1	PC.
073			488002	CONTROL PANEL	1	PC.
074			488003	GUARD PLATE	1	PC.
075			488004	BASE PLATE	1	PC.
076			455014	CAPACITOR COVER	2	PC.
100			247069	TUBE (Between Pressure Switch and Regulator)	1	PC.
101			240050	TUBE (Between Pressure Gauge and Nipple / Regulator)	2	PC.
102			353001	SCREW FOR PRESSURE GAUGE	2	PC.
103			371001	NUT FOR PRESSURE GAUGE	2	PC.
C01			471150	CARTON	1	PC.
<b><u>ACCESSORIES</u></b>						
A01	2		10TT-8	QUICK COUPLER (1/4")	2	PC.
A02			171006	AIR FILTER (ELEMENT ONLY)	1	PC.
A03			181122-A	COMPRESSOR OIL (0.25L)	1	PC.
			EAOIL10	Compressor Oil (1L)	1	PC.
A04			YY036003-A	QUICK CONNECT 1/4" X 1/4" MALE	1	PC.
A05			YY36003-1	QUICK CONNECT 1/4" X 3/8" MALE	1	PC.
A06			YY311002-X	QUICK CONNECT 1/4" X 1/4" FEMALE	1	PC.
A07			YY311018-A	UNIVERSAL AIR COUPLER 1/4" X 1/4" FEMALE	1	PC.
A08			YYVAH25	3/8" X 25' P.V.C. AIR HOSE	1	PC.
			YYVAH50	3/8" X 50' P.V.C. AIR HOSE	1	PC.
			YYRAH25	3/8" X 25' RUBBER AIR HOSE	1	PC.
			YYRAH50	3/8" X 50' RUBBER AIR HOSE	1	PC.
			YYRAH100	3/8" X 100' RUBBER AIR HOSE	1	PC.